



medisun[®] 250

SEVERAL PARTIAL BODY TREATMENTS FOR USE
IN MEDICAL PRACTICES



medisun[®] 250

SEVERAL PARTIAL BODY TREATMENTS

The compact partial body system medisun[®] 250 permits universal use and a great number of treatment options. The mobile swivelling stand permits very comfortable treatments while lying, standing or sitting. The exposure time is set through an integrated electronic timer via the

dosage table or with a microcontroller (Jouletimer). The large exposure field of 60 x 40 cm makes treatment easy for well-accessible skin areas, as well as the feet and hands, or even the scalp.

HIGHLIGHTS:

- Variable lamp equipment for different treatments
- Treatment while standing, lying and sitting
- Short exposure times due to high-performance lamps
- Electronic time control with dosage-time table
- Gas-pressure spring for smooth height adjustment
- Space-saving mobile stand
- Time limitation and safety shutdown
- User-friendly operation
- Ergonomic design
- Acrylic protection panels to avoid touching the lamps
- Automatic deactivation at the end of the exposure time
- Simple cleaning

TECHNICAL DATA

DIMENSIONS in cm	L 72 x T 52 x H 10
WEIGHT	approx. 25kg
MAINS CONNECTION	230 V / 50 Hz
UV LAMPS	4 x 20W / 40W
CERTIFICATION	CE 0197
WEEE-REG. NO.	DE 91065138

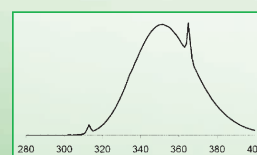
LAMP TYPE

UV range	UV lamps	Item-No.	Control
(P)UVA	4 x 40W	5424	Electronic timer
UVB ₃₁₁	4 x 20W	5425	Electronic timer
(P)UVA	4 x 40W	5669	Jouletimer
UVB ₃₁₁	4 x 20W	5670	Jouletimer

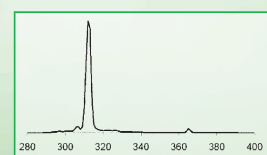
Technical changes reserved.



Product video
www.medisun.de/en



UVA



UVB-311