

Accessories for medifa 7000



Foot switch for medifa 7000

Art.-no. 704060

- Additional control unit to adjust the main functions height, lateral and Trendelenburg movement
- Tethered



Infrared remote control for medifa 7000

Art.-no. 704070

- Wireless data transfer
- Control panel for all electric functions of operating table
- Incl. charging station



Longitudinal sliding for medifa 7000

Art.-no. 71640

- Electrical longitudinal sliding of table top up to 380 mm
- Changes lowest height of operating table from 580 mm to 600 mm
- Cannot be retrofitted!



Motorised drive

Art.-no. 70645

- Motorised fifth castor for manoeuvring and positioning of operating table
- Cannot be retrofitted!



Hand grips for motorised drive

Art.-no. 71570

- For manoeuvring and positioning of operating table by means of electronic drive at operating table's head end
- With integrated speed control
- Material: Stainless steel
- Suitable for: 70645



Back-up system for medifa 7000

Art.-no. 70655

- System ensures the operability of operating table's basic functions (height, lateral, Trendelenburg and brakes) in case of electronic defect by means of 24V battery
- Cannot be retrofitted!

Accessories for medifa 7000



Radiographic cassette tunnel for 700200

Art.-no. 71642_2

- To insert radiographic cassette carrier

Radiographic cassette tunnel for 700300

Art.-no. 71642_3

- To insert radiographic cassette carrier



Coupling point for extension device 63000_2

Art.-no. 63005_1

- For attachment of extension device, for operating tables of series 7000 **without** sliding

Coupling point for extension device 63000_2

Art.-no. 63005_2

- Same as 63005_1, but for operating tables of series 7000 **with** sliding



Head rest for medifa 7000

Art.-no. 71144

- Easy adjustment by means of gas spring from -45° to +45°
- Docking and undocking at back rest
- Radiolucent
- L x W: 266 x 550 mm
- Viscoelastic SF upholstery, H = 80 mm, electrically conductive, detachable



Head rest for medifa 7000

Art.-no. 71146

- Easy adjustment by means of gas spring from -45° to +45°
- Double joint enables additional tilting
- Docking and undocking at back rest
- Radiolucent
- L x W: 266 x 550 mm
- Viscoelastic SF upholstery, H = 80 mm, electrically conductive, detachable



Head rest for medifa 7000

Art.-no. 71147

- Easy adjustment by means of gas spring from -45° to +45°
- Double joint enables additional tilting
- Docking and undocking at back rest
- Radiolucent
- L x W: 266 x 550 mm
- Viscoelastic SF upholstery, H = 80 mm, electrically conductive, detachable



Head-end rail (piece)

Art.-no. 71148

- Additional rail at head rest
- Length: 300 mm
- Material: Stainless steel
- Suitable for: 71144, 71146





Side rails at head rest (pair)

Art.-no. 71149

- Additional side rails at both sides of head rest
- Length: 160 mm
- Material: Stainless steel
- Suitable for: 71144, 71146



Upper back rest for medifa 7000

Art.-no. 71250_2

- Docking and undocking at lower back rest
- Radiolucent
- L x W: 268 x 550 mm
- Viscoelastic SF upholstery, H = 80 mm, electrically conductive, detachable
- Integrated side rails (EU)



Tripartite back rest for medifa 7000

Art.-no. 71390

- Incl. head rest
- Easy access to shoulder area by means of three detachable segments
- Docking and undocking at lower back rest
- Radiolucent
- L x W: 320 x 550 mm
- Viscoelastic SF upholsteries, H = 80 mm, electrically conductive, detachable



Pelvis section extension for medifa 7000

Art.-no. 71125_2

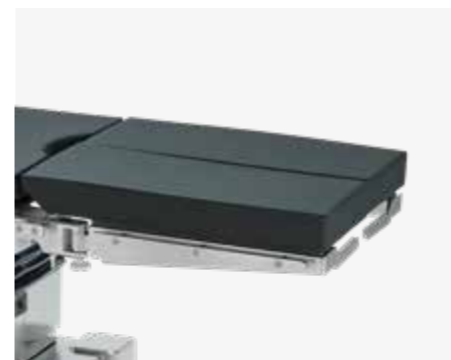
- Extension of pelvis section by 400 mm
- With cut-out
- Radiolucent
- L x W: 400 x 550 mm
- Viscoelastic SF upholstery, H = 80 mm, electrically conductive, detachable
- Integrated side rails (EU)



Leg rest for medifa 7000

Art.-no. 71625

- Electrically adjustable
- Docking and undocking at pelvis section
- Radiolucent
- L x W: 660 x 550 mm
- Viscoelastic SF upholstery, H = 80 mm, electrically conductive, detachable
- Integrated side rails (EU)



Divided leg rest for medifa 7000 (pair)

Art.-no. 71615_2

- Electrically adjustable
- Swivelling up to 180°
- Docking and undocking at pelvis section
- Radiolucent
- L x W: each 660 x 266 mm
- Viscoelastic SF upholsteries, H = 80 mm, electrically conductive, detachable
- Integrated side rails (EU)



Leg rest with access extension for medifa 7000 (pair)

Art.-no. 71620

- Electrically adjustable
- Swivels out for direct patient access
- Docking and undocking at pelvis section
- Radiolucent
- L x W: each 740 x 266 mm
- Viscoelastic SF upholsteries, H = 80 mm, electrically conductive, detachable
- Integrated side rails (EU)



Double divided leg rest for medifa 7000 (pair)

Art.-no. 71660

- Electrically adjustable
- Swivelling up to 180° and bendable
- Docking and undocking at pelvis section
- Radiolucent
- L x W: each 662 x 266 mm
- Viscoelastic SF upholsteries, H = 80 mm, electrically conductive, detachable
- Integrated side rails (EU)



Carbon positioning rest for medifa 7000

Art.-no. 71630

- Incl. upholstery
- For intraoperative x-ray, optimal radiolucency (360°)
- Docking and undocking at pelvis section or lower back rest
- L x W: 750 x 540 mm
- Viscoelastic SF upholstery, H = 70 mm, electrically conductive, detachable



Transfer leg rest for medifa 7000

Art.-no. 71635

- For short-time positioning of legs
- Docking and undocking at pelvis section
- Radiolucent
- L x W: 900 x 500 mm



Extension segments (pair)

Art.-no. 61355SF

- For extension of the operating table's lying surface
- Integrated side rails (EU)
- L x W: each 310 x 110 mm
- Viscoelastic SF upholsteries, H = 70 mm, electrically conductive, detachable
- Suitable for all operating tables with viscoelastic foam upholsteries



Radiographic cassette carrier for medifa 7000

Art.-no. 71643

- To insert radiographic cassettes under table top of operating table
- With telescopic rod
- L x W x H: 470 x 385 x 16 mm
- Suitable for radiographic cassettes with dimensions 14" x 17" (US)
- Material: Stainless steel
- Suitable for: 71642_2, 71642_3