



# THE IDEAL CRYOSURGERY DEVICE FOR SMALL LESIONS

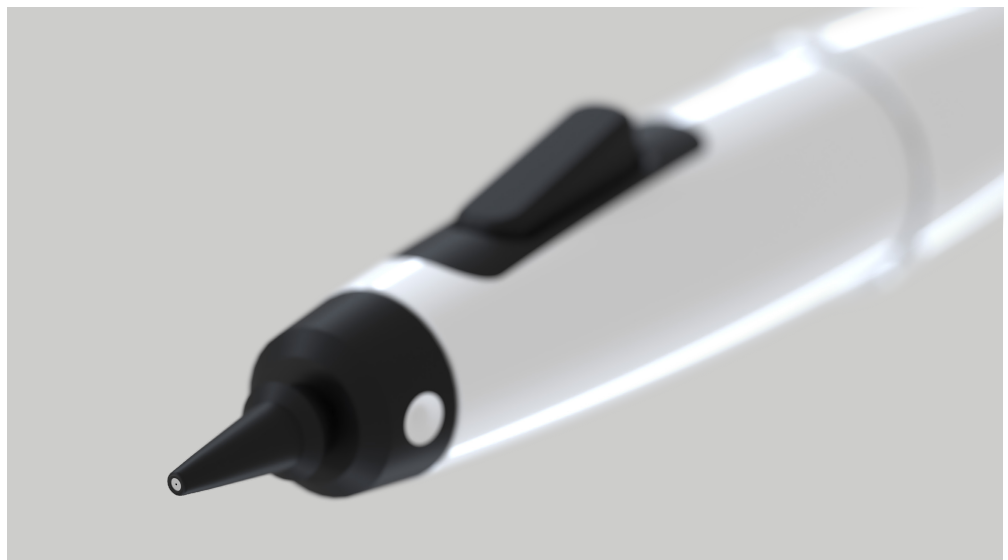
CryoPen sets a new standard for the cryogenic treatment of benign skin lesions, offering the ultimate in control, convenience, and cost-effectiveness – as well as an outstanding patient experience.

This high-performance, ergonomic cryotherapy pen dispenses a fine jet of nitrous oxide under high pressure, allowing you to work with millimeter precision.

The CryoPen M is one of our most compact devices, and works with our smallest cartridges, making it ideal for small or superficial lesions.

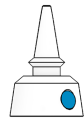
## Key features

- Ergonomic design for superior control
- Leading-edge microtechnology ensures controlled gas flow
- Takes easy-to-load 8g N<sub>2</sub>O cartridges
- Aluminum body with applicators in medical-grade materials
- Provided with 2 autoclavable applicators
- Suitable for occasional use
- Certified



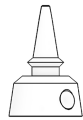


# APPLICATORS



Ø 1-3mm

Power: ■



Ø 2-6mm

Power: ■■

### Continuous flow time with an 8g cartridge



# PRODUCT INFORMATION

### Device

The CryoPen M is suitable for all treatment situations where delicate freezing power is required.

### Procedure

No special preparation is required. Apply the jet of nitrous oxide for 2 to 45 seconds on each lesion, depending on the size and depth of the lesion. For larger lesions, use circular or back-and-forth movements to treat all the tissue.

### What kind of lesions?

Acrochordon, actinic keratosis and cheilitis, capillary hemangioma, cutaneous leishmaniasis, discoid lupus erythematosus, filiform warts, flat warts, vulgar warts, plantar warts, anogenital warts, rosacea, lichen sclerosus, granuloma annulare, molluscum contagiosum, seborrheic keratosis and viral lesions.



# CONTENTS OF THE STARTER SET

**Device**

CryoPen M

**Applicators**

1-3mm applicator  
2-6mm applicator

**Cartridges**

12x 8g cartridges

**Accessories**

Metal carrying case  
Forceps  
Device stand

**Documentation**

Treatment overview  
User manual

# BASICS

**Dimensions**

Device: 19.7 x 2.75 x 2.75 cm  
Carrying case: 28.8 x 22.8 x 6.7 cm  
Starter set: 38 x 30 x 7.5 cm

**HS codes**

90189084 (device)  
28112930 (cartridges)

**Weight**

Device with a full cartridge: 200g  
Starter set: 2,357g

