

DERMAT  
MEDICAL SUPPLIES

016/ 40 05 45  
info@dermat.be  
www.dermat.be



DELTA 30  
PRO



**Invented to discover.  
The HEINE DELTA 30 PRO  
dermatoscope.**

# Dermatoscopy has never been so PRO.

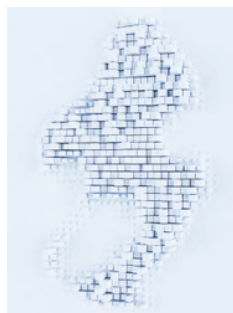
We've been building on our ideas for our dermatoscopes day in, day out for around 12,418 days now. Designing, trying out, discarding and improving. Over and over again. When we invented the world's first dermatoscope in 1989, our aim was to develop an instrument that would maximise the accuracy of diagnosis. And we haven't stopped doing that since. The HEINE DELTA 30 PRO is the result of all our hard work.

## PROFOUND IMPROVEMENTS.

All the small things count during skin examinations. That's why we've rearranged the LED<sup>HQ</sup> on the new HEINE DELTA 30 PRO. By repositioning the LEDs the light reaches deeper layers of the skin – giving an extremely vivid, spatial impression of lesions, similar to a 3D image.



Visualisation with a  
conventional dermatoscope



Visualisation with the new  
HEINE DELTA 30 PRO





Active Aspherical HO 10x Magnifier

P

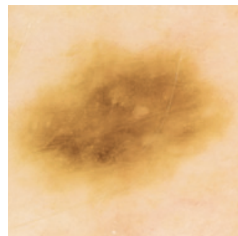
Power symbol

C

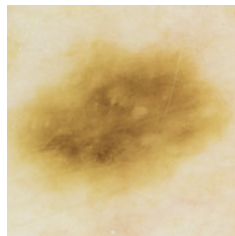
# New | Change the colour temperature. Not your viewing habits.

## **HEINE colorSHIFT.**

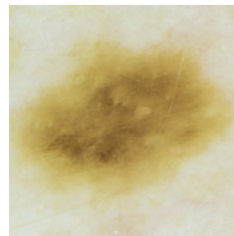
The HEINE colorSHIFT function is a genuine world first. From warm white through the bluish white it allows you to easily adjust the colour temperature through 4 settings to suit your own viewing habits. The touch of a button is all it takes.



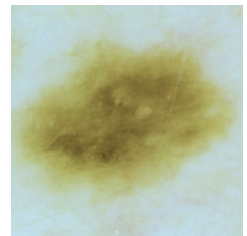
Warm white



Neutral white



Cold white



Bluish white

## **DIAGNOSIS – INDEPENDENT OF DISTANCE.**

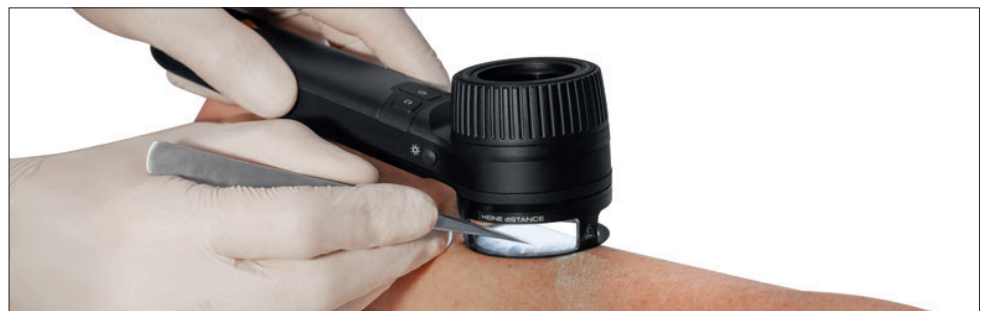
Whether you prefer to work close-up or slightly further away, the HEINE DELTA 30 PRO has precision optics that keep the image sharp and crystal clear at all times. The instrument's angled, ergonomic handle prevents your hand from coming into direct contact with the patient's skin.

# New | The working ring HEINE diSTANCE.

## KEEPING A CONSTANT DISTANCE UNDER MAGNIFICATION.

The working ring enables the user to examine and manage a lesion under magnification without contact.

The distance always remains constant, instruments can be inserted through the openings in the side, lesions can be marked, foreign bodies can be removed, and much more. The dermatoscope does not come into contact with the patient's skin.



# When little things make a big difference.

## **TOGGLE FUNCTION.**

Being able to distinguish between dark and white structures and patterns all comes down to light during polarisation. The toggle function makes switching between polarised and non-polarised light extremely easy and ensures that you are getting a more accurate view of your patient.

## **YOU NEED A PHOTOGRAPHIC MEMORY.**

The new DELTA 30 PRO provides the ability to capture digital images using the HEINE universal adapter with most available smartphones. By using it in combination with the HEINE DERManager\*, you can easily create, manage and chronologically document images or seek a second opinion if required.

\*All the data is stored on servers in Germany in accordance with the European Union's stringent General Data Protection Regulation (GDPR). So the only person who can keep track of your data is you. And only you.

<b>DELTA 30 PRO</b> with contact plate with scale, E4-USBC power supply with cable, case	<b>K-235.28.305</b>
<b>DELTA 30 PRO bundle</b> with contact plate with scale, small contact plate, E4-USBC power supply with cable, charger 30 table charging station, universal smartphone adapter, case	<b>K-236.28.306</b>
<b>HEINE diSTANCE working ring</b>	<b>K-000.34.103</b>

More information on further products and accessories [www.heine.com](http://www.heine.com)

# Quality made in Germany.

We live and breathe quality. In everything we do. Every product we make. Every lens we polish. Every screw we tighten. Every optic fiber we bundle. Always. Every day.

The durability of our primary diagnostic instruments is legendary. Every single instrument is the result of decades of product development, continuous improvements, production and a 100 % quality control in our own facilities. We make certain that our high expectations of quality are maintained.

It is how we ensure that our high-end products meet our claim of providing the most accurate and earliest possible diagnosis.

No more, no less.

**HEINE Optotechnik GmbH & Co. KG**

Dornierstr. 6, 82205 Gilching, Germany  
[www.heine.com](http://www.heine.com)



We reserve the right to change  
specification without notice.

10/23. A-000.00.241 EN

