

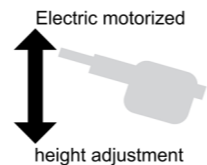
# Series 6000E

## 2-sectioned table with electric lifting column

Suitable for C-arm (vertical X-ray)

Model 6100-03E white aluminium powder coated (RAL 9006)

Model 6100-04E silver aluminium powder coated (RAL 9007)



Model 6100-04XLE  
with option:  
Paper roll holder (1270K/F);  
upholstery colour:  
64-154 limone



Table in highest position



Table in lowest position



6100-04E with option: Lying surface 1-sectioned (028), paper roll holder (1280K/F)

### Basic equipment:

- Movable on twin castors, Ø 100 mm, with central lock
- Electric motorized height adjustment by electric lifting column, arranged on one side
- Electromotive drive control by 1 foot switch and 1 hand switch
- Integrated safety function for automatic blocking of electromotive drive
- Dewert-hygiene-equipment



### Upholstery:

Lying surface 2-sectioned:

- Head part stepless up- (+ 40°) and downwards (-30°) adjustable by gas spring
- Length head part: 420 mm
- Fixed foot part, length foot part: 1580 mm
- Lying surface with area which is able to be x-rayed (from end of head part), suitable for chest and pevic regions, length: 1040 mm x width: 690 mm
- Option: Different measures, lying surface 1-sectioned, also with HPL board and removable upholstery, possible
- Upholstery thickness: 60 mm

### Technical data:

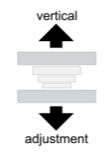
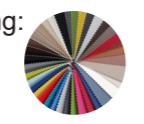
- Electronical height adjustment: 620 mm to 1020 mm in 24 Sec. by integrated AC-motor with a pressure capacity of 3000 N
- Width of lying surface: 800 mm
- Length of lying surface: 2000 mm
- Load capacity: 200 kg; according to IEC 60601 tested with fourfold static load



### Design:

2 different variants for artificial leather eligible for upholstery covering:

- Skai® Pandoria Plus with velvet-smooth surface
- Skai® Toronto EN with innovative staynu-technology



Available as an option (see pricelist for additional options)

### Upholstery options



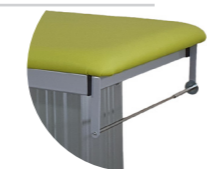
Art. no. 029  
Detachable mattress (1-sectioned) with HPL board, able to be X-rayed, mattress and board with nose opening and upholstery part to close, limited ability to be X-rayed in section of nose opening  
measures: 1950 mm x 730 mm  
area which is able to be X-rayed: 1340 x 650 mm



Art. no. 028  
Lying surface 1-sectioned, width: 730 mm  
area which is able to be X-rayed: 1360 x 600 mm

Art. no. 028-10  
Lying surface 1-sectioned, width: 800 mm  
area which is able to be X-rayed: 1360 x 670 mm

### Paper roll holder



Art. no. 1280K/F  
Paper roll holder, mounted at foot part, for width 800 mm

### Nose opening



Art. no. 1610  
Nose opening, in head part

Art. no. 1620  
Upholstery part to close

### Add-on elements



Art. no. 1410  
1 piece of side rail, length: 350 mm

Art. no. 1420  
1 piece of side rail, length: 1300 mm

### Side guards



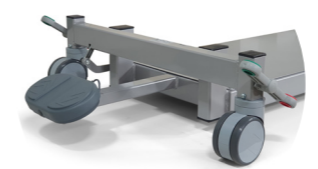
Art. no. 1080  
1 side guard lateral lowerable, chromium-plated, completely made of steel tube, length: 1060 mm



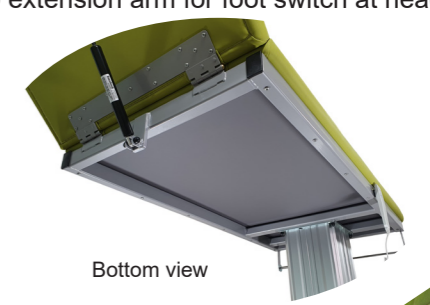
Art. no. 1005  
1 side guard to fit on side rail, with attachment clamp, chromium-plated, length: 800 mm



### Special feature: Suitable for C-arm (vertical X-ray):



- Easy operation of height adjustment due to extension arm for foot switch at head
- Lying surface: With area which is able to be X-rayed (from end of head part), suitable for chest and pevic regions (not head part), length: 1000 mm x width: 650 mm



Bottom view



**DERMAT**  
MEDICAL SUPPLIES

016/ 40 05 45  
info@dermat.be  
www.dermat.be

